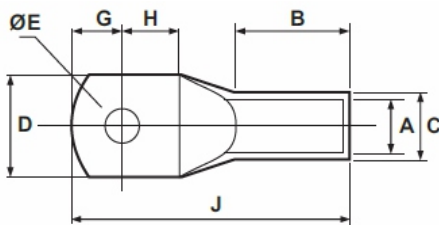


### COPPER CABLE LUGS: DIN - 46235

MATERIAL : ELECTROLYTIC HIGH CONDUCTIVITY COPPER  
FINISH : ELECTRO TINNED  
FEATURES : WITHOUT INSPECTION HOLE



Product Ref.	Size mm <sup>2</sup>	Stud Hole E	Dimensions mm						
			A	C	D	G	H	B	J
HGD- 16:6	6.5	16	5.5	8.5	12	8	8	20	36
HGD- 16:8	8.5					10	10	20	36
HGD- 16:10	10.5					12	12	20	37
HGD- 25:6	6.5	25	7	10.0	15	8	8	20	38
HGD- 25:8	8.5				15	10	10	20	38
HGD- 25:10	10.5				17	12	12	20	38
HGD- 35:8	8.5	35	8.2	12.5	17	10	10	20	42
HGD -35:10	10.5				19	12	12	20	42
HGD -35:12	13				21	13	13	20	42
HGD -50:8	8.5	50	10	14.5	22	10	10	28	52
HGD -50:10	10.5				22	12	12	28	52
HGD -50:12	13				23	13	13	28	55
HGD -70:10	10.5	70	11.5	16.5	24	12	12	28	55
HGD -70:12	13				24	13	13	28	55
HGD -95:10	10.5	95	13.5	19.0	28	12	12	28	65
HGD -95:12	13				28	13	13	28	65
HGD -120:10	10.5	120	15.5	21.0	32	16	16	32	70
HGD -120:12	13				32	17	17	32	70
HGD -120:16	17				32	20	20	32	70
HGD-150:10	10.5	150	17.0	23.5	34	16	16	34	78
HGD-150:12	13				34	17	17	34	78
HGD-150:16	17				34	20	20	34	78
HGD-185:10	10.5	185	19.0	25.5	37	15	16	40	82
HGD 185:12	13				37	16	17	40	82
HGD-185:16	17				37	19	20	40	82
HGD-240:12	13	240	21.5	29.0	42	16	17	40	92
HGD-240:14	15				42	19	20	40	92
HGD-240:16	17				42	19	20	40	92
HGD-300:12	13	300	24.5	32.0	48	16	17	50	100
HGD-300:14	15				48	19	22	50	100
HGD-300:16	17				48	22	22	50	100
HGD-400:16	17	400	27.5	38.5	55	25	25	55	115
HGD-400:20	21				55	25	25	55	115
HGD-500:20	21	500	31.0	42.0	60	25	25	70	126
HGD-630:20	21	630	34.5	45.0	60	25	25	80	135

(All Dimensions in mm)